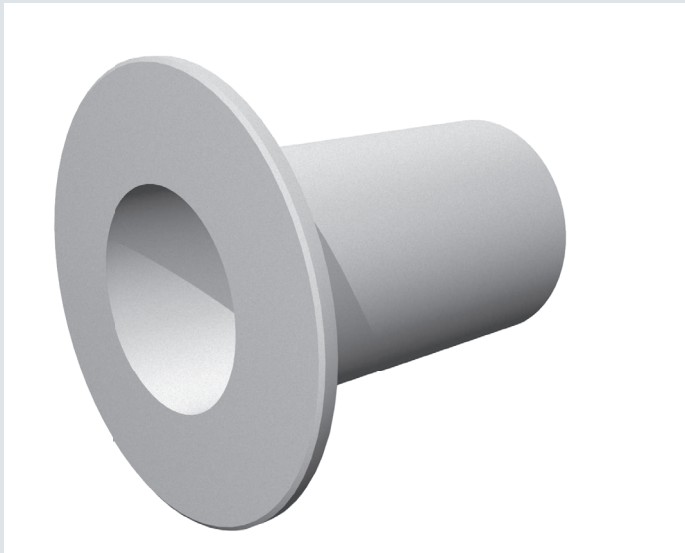


# Curaflex® 3001

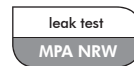
against non-pressing water

- opening for penetrations
- for buildings **yet to be constructed**
- for buildings with **bituminous thick-coating** (black tank)
- with **bonding flange**



### Product benefits

- dimensionally stable and resistant special fiber
- cement homogeneous connection to concrete
- with fiber cement flange as adhesive flange for the onsite installation of thick-coating (KMB)
- optimal connection via fiber cement flange



Pipe sleeve

### Technical details

- gas-tight with optional coating of the pipe sleeve inside and front surface
- can be combined with all Curaflex® gasket inserts
- for all conventional synthetically modified bituminous coating and thick-coatings

#### material:

- asbestos-free fiber cement
- fiber cement - fixed flange as adhesive flange
- glass fiber fabric

Accessories from page 88

pipe outer diameter from - to	NB pipe sleeve [mm]	pipe sleeve diameter D <sub>2</sub> max. [mm]	bonding flange D <sub>5</sub> max. [mm]
1 - 40	80	140	285
41 - 57	100	160	305
58 - 77	125	165	330
78 - 104	150	190	355
105 - 145	200	245	405
146 - 190	250	300	455
191 - 233	300	350	505

L1: standard length of pipe sleeves: 415 mm

We supply pipe sleeves in more sizes. Talk to us.

