

- flange with sleeve for penetrations
- for installation **on the face of walls**
- for buildings with **tanking membranes** or applications with **bituminous thick-coating** (black tank)
- with **fixed and loose flange**
- suitable for **reconstruction**



**Product benefits**

- sealing on the face of wall (nature of the hole/wall opening is not relevant)
- suitable for penetrations without a suitable core bore or pipe sleeve
- the inside face of the sleeve provides an optimum contact surface for the elastomer of the Curaflex® gasket insert



**Technical details**

- with fixed and loose flange (loose flange split) made of steel according to DIN 18 195
- for buildings with tanking membranes/thick-coating (black tank)
- gas-tight
- can be used in conjunction with all Curaflex® gasket inserts
- depending on the tanking membranes arranged on both sides packings 1775 (with thin and hard membranes) or accessories for thick-coating

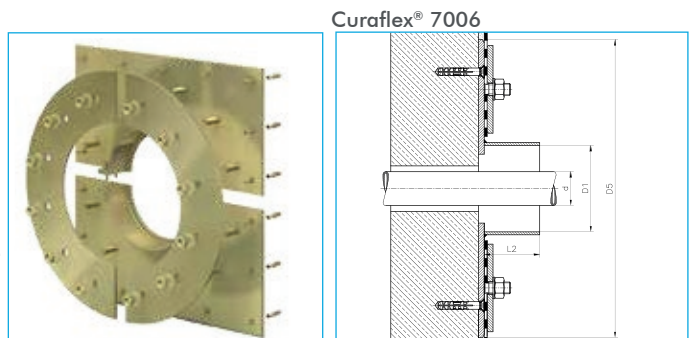
**Material:**

steel, electro-galvanised, yellow passivated and sealant coated; optionally made of stainless steel grade 304 (1.4301) or grade 316 (1.4571/1.4404)

pipe external diameter from - to	NB pipe sleeve [mm]	fixed flange diameter / edge length D <sub>s</sub> max. [mm]	
		Curaflex® 7006	Curaflex® 7006/T
1 - 40	80	440	530
41 - 57	100	460	550
58 - 77	125	480	570
78 - 104	150	510	600
105 - 145	200	560	650
146 - 190	250	610	700
191 - 233	300	660	750
234 - 288	350	710	800
289 - 339	400	760	850
340 - 380	450	810	900
381 - 430	500	860	950
431 - 530	600	960	1050
531 - 620	700	1060	1150

L2 (length of steel pipe sleeve) [mm]: 110

**We supply pipe sleeves in more sizes. Please call us.**



Variant:  
Curaflex® Pipe sleeve 7006/T  
split version. For installations with existing pipeline in the wall.

