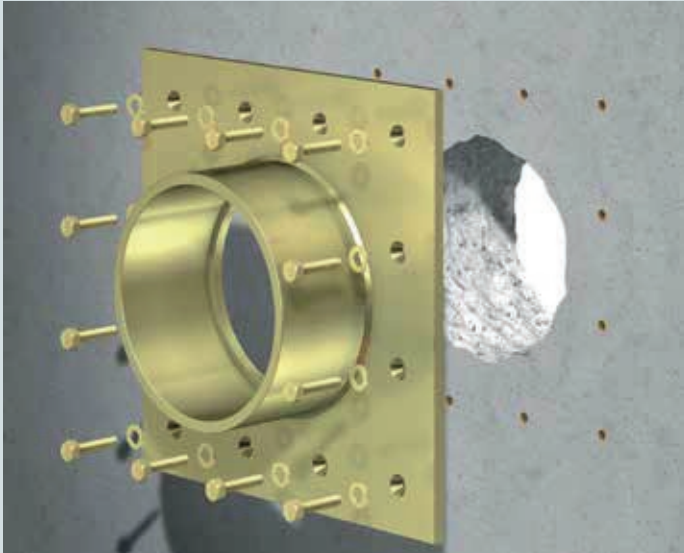


Curaflex® 8000

against pressing or non-pressing water

- flange with sleeve for penetrations
- for installation **on the face of walls**
- for **waterproof concrete** (white tank) or applications with **bituminous thick-coating** (black tank)
- suitable for **reconstruction**

Pipe sleeves



Product benefits

- sealing on the face of wall (nature of the hole/wall opening is not relevant)
- suitable for penetrations without a suitable core bore or pipe sleeve
- the inside face of the sleeve provides an optimum contact surface for the elastomer of the Curaflex® gasket insert

25
Years
Guarantee

Technical details

- gas-tight
- leak-proof against pressing water and non-pressing water
- for buildings without tanking membranes (white tank)
- for buildings with thick-coating - contact surface "bonding flange" additionally sanded
- can be used in conjunction with all Curaflex® gasket inserts

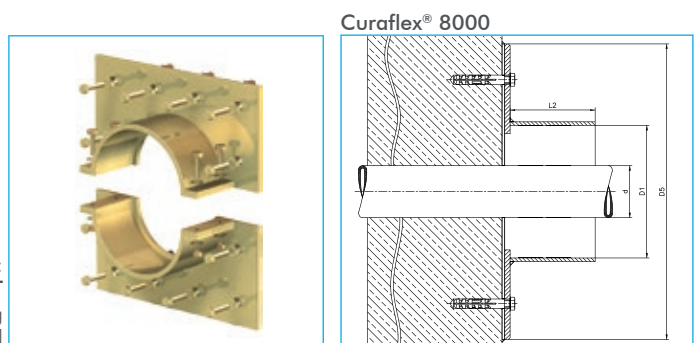
materials:

steel, electro-galvanised, yellow passivated and sealant coated;
optionally made of stainless steel grade 304 (1.4301) or grade
316 (1.4571/1.4404)

with thick-coating made of ggV, contact surfaces sanded

Delivery incl. fastening material for solid walls

pipe external diameter from - to	NB pipe sleeve [mm]	fixed flange diameter/ edge length D _s max. [mm]
1 - 40	80	260
41 - 57	100	280
58 - 77	125	300
78 - 104	150	330
105 - 145	200	380
146 - 190	250	430
191 - 233	300	480
234 - 288	350	530
289 - 339	400	580
340 - 380	450	630
381 - 430	500	680
431 - 530	600	780
531 - 620	700	880
L2 (length of steel pipe sleeve) [mm]: 110		
We supply pipe sleeves in more sizes. Please call us.		



Variant:
Curaflex® pipe sleeve 8000/T
split version. For installations with existing
pipeline in the wall



Service
Sealing
Solutions Ltd

For more information, please call us on 01952 510050
or email sales@servicesealingsolutions.co.uk