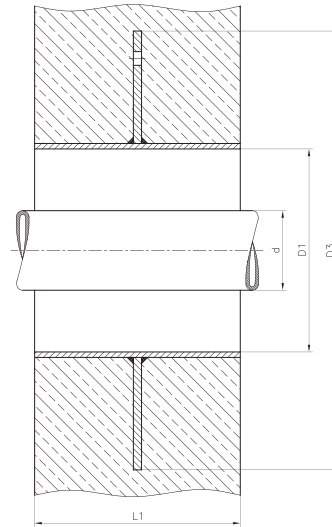
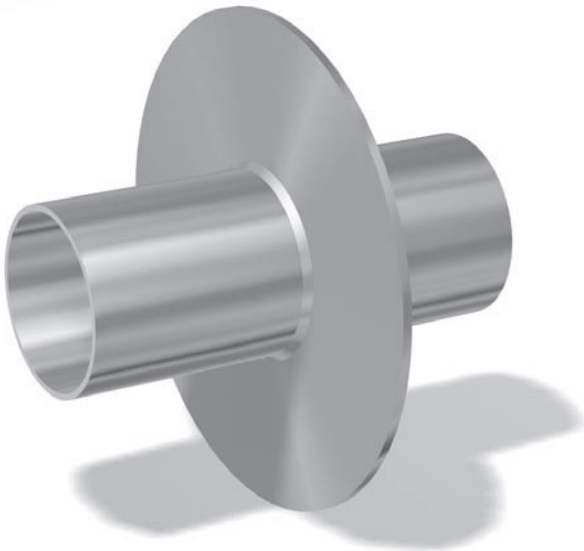


Curaflex® pipe sleeve 9000

against pressing / non-pressing water



Technical details

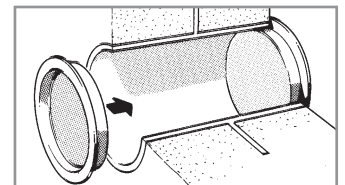
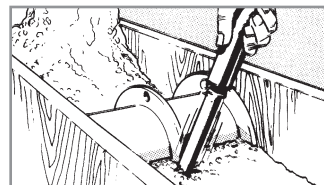
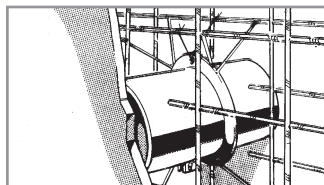
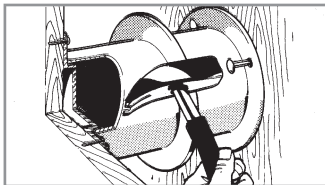
- Curaflex® pipe sleeve with puddle flange for installation in walls, ceilings and floors
- can be used in conjunction with all Curaflex® gasket inserts
- for buildings without tanking membranes
- leak-proof against pressing and non-pressing water
- gas-tight
- material: steel, electro-galvanized, yellow passivated and sealant coated

Accessories:

- Curaflex® 1701 (formwork fastener)
- Curaflex® 1702 (protection cap)
- Curaflex® 1708 (aesthetic seal)

Pipe/Cable external diameter d [mm]	Pipe sleeve internal diameter D ₁ [NB in mm]	Puddle flange D ₃ [mm]	Standard lengths L ₁ [mm]
1 - 40	80	290	200 240 250 300 365 400 500
41 - 57	100	310	
58 - 77	125	340	
78 - 104	150	360	
105 - 145	200 ¹⁾	420	
146 - 190	250 ²⁾	480	
191 - 233	300 ³⁾	530	
234 - 288	350	560	
289 - 339	400	610	
340 - 380	450	660	
381 - 430	500	710	
431 - 530	600	810	
531 - 620	700	910	
actual internal diameter of coated steel pipe sleeve [mm]: 1) 210.1; 2) 263; 3) 312.7			

For allocations D₁ [NB] > 700 see table of specification.
Further sizes, other materials and tailor-made specials available on request.



Detailed installation instructions enclosed with the product.