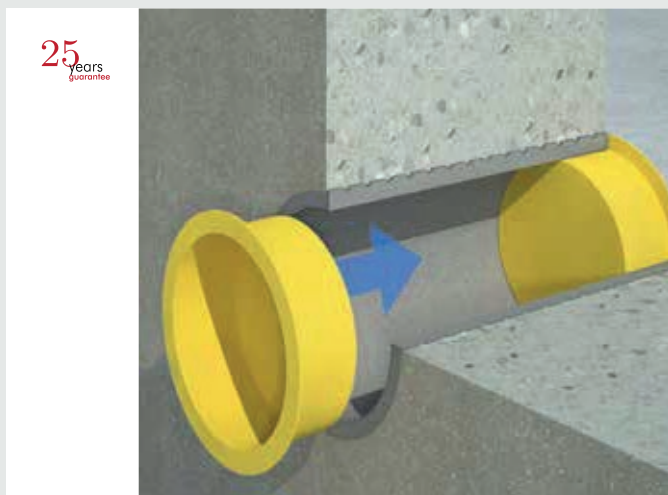


# Curaflex® Sealing plug (1702)



## TECHNICAL DETAILS

- Plugs for closing the pipe sleeve during the raw construction phase in order to prevent the penetration of dirt and foreign bodies
- Provided with a wide edge for a secure hold in the pipe sleeve
- Available for pipe sleeves up to DN 400

## MATERIAL

- Plastic

| Inner diameter pipe sleeve [DN in mm] | Outer diameter sealing plug [mm] | Component height [mm] |
|---------------------------------------|----------------------------------|-----------------------|
| 80                                    | 90                               | 29                    |
| 100                                   | 110                              | 30                    |
| 125                                   | 135                              | 30                    |
| 150                                   | 159.5                            | 33                    |
| 200                                   | 214                              | 38                    |
| 250                                   | 264                              | 46                    |
| 300                                   | 314                              | 23                    |
| 400                                   | 420                              | 33                    |

